

DuoDrive with energy efficiency IE5+

Two become one



DuoDrive – integrated geared motor concept

The revolutionary DuoDrive with integrated IE5+ motor is especially suitable for reducing the total cost of ownership.

- ▶ Extremely high system efficiency of up to 92 %
- ▶ Reduced TCO and fast ROI
- ▶ Reduced number of versions through constant motor torque over a wide speed range
- ▶ Very compact Wash-down design for optimal installation space utilisation
- ▶ Market-compatible connection dimensions for simple replacement
- ▶ Very low noise emissions thanks to quiet running

Features

- ▶ Latest generation permanent magnet synchronous motor (PMSM) integrated in a single-stage helical in-line gear unit housing
- ▶ Power range from 0.35 to 3 kW in a single size
- ▶ Flexible attachment options:
 - ▶ B5 flange (diameter 160 mm)
 - ▶ B14 flange (diameter 160 or 200 mm)
 - ▶ Torque arm, shrink disc and GRIPMAXX™
- ▶ Wide variety of motor connection options such as HANQ8/ HAN10E plug connectors, circular connectors or directly wired
- ▶ Various motor options such as holding brake or integrated encoder system

Perfect system solution combined with NORD drive electronics

- ▶ NORDAC *PRO* for control cabinet installations
NODAC *LINK*, *FLEX* and *ON+* for decentralised wall mounting
- ▶ Suitable system wiring:
 - ▶ Motor connection
 - ▶ Mains supply
 - ▶ Signal connection
- ▶ Together with perfectly matched drive electronics, NORD DuoDrive is the perfect solution for high power requirements and outstanding system efficiency



nsd tupH Sealed Surface Conversion System

NORD geared motors with nsd tupH are the optimal choice for use in challenging environmental conditions:

- ▶ Easy to clean surfaces
- ▶ Resistant to acids and alkalis (wide pH range)
- ▶ No spreading of corrosion, even if damaged
- ▶ No flaking
- ▶ Corrosion resistant – no contact corrosion
- ▶ Conforms to FDA Title 21 CFR 175.300
- ▶ Free from chromates

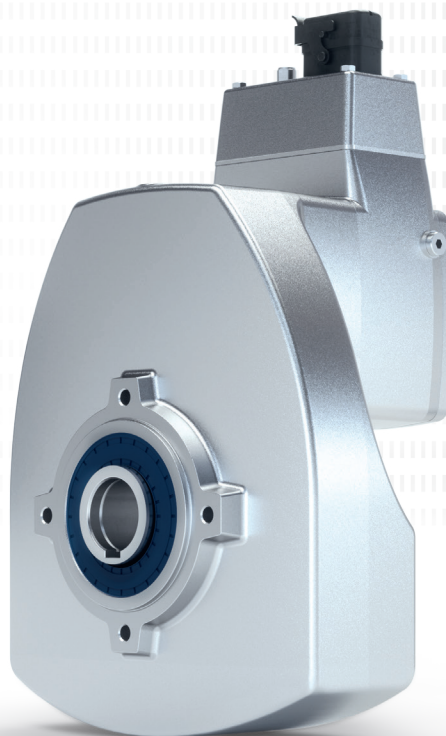
The complete solution for extreme conditions:

- ▶ Surface-treated housing components
- ▶ DIN and standard components made from stainless steel
- ▶ Wash-down housing (gear unit and motor)
- ▶ Stainless steel shafts
- ▶ Special radial shaft seals
- ▶ Food-compatible oil

Variant reduction

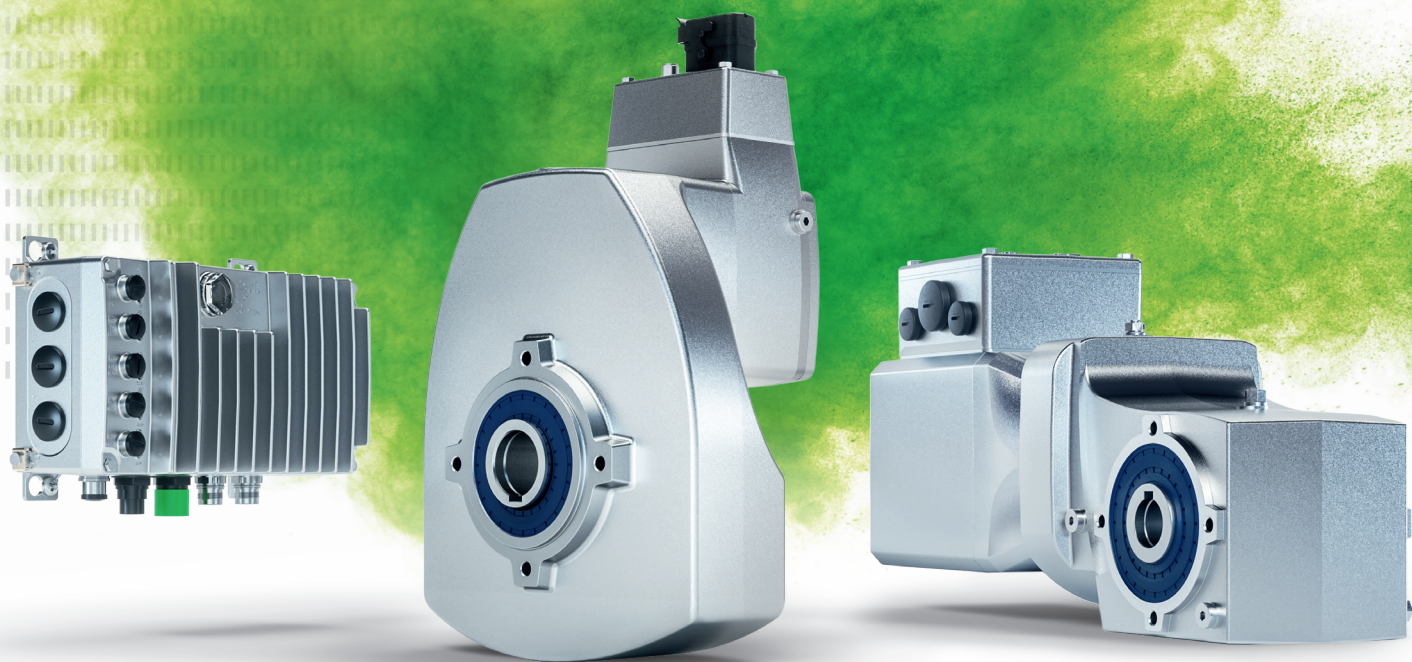
By way of a targeted reduction of variants, it is possible to minimise administrative expenses and to set up leaner manufacturing, logistics, storage and service processes. The new generation of IE5+ motors combines the benefits of the modular system with the possibilities of reducing variants. The solution will be tailored to each customer and features the following advantages:

- ▶ Motor can be operated worldwide
- ▶ Utilisation of the high system overload capacity
- ▶ Large adjustment range
- ▶ Explicitly tailored to the individual load range
- ▶ Minimal space requirements paired with high power density



ALL-ROUNDERS FOR ALL-AROUND COMPATIBILITY.

Innovative, compatible, future-proof:
DuoDrive, IE5+ and NORDAC *ON*.



For more information:



S9012 –
IE5+ motor



TI 60-0001

NORD DRIVESYSTEMS Group

- ▶ Family business from Bargteheide near Hamburg with 4,000 employees
- ▶ Drive solutions for more than 100 branches of industry
- ▶ 7 production locations worldwide
- ▶ Present in 98 countries on 5 continents
- ▶ More information: www.nord.com

Headquarters:

Getriebebau NORD GmbH & Co. KG
Getriebebau-Nord-Str. 1
22941 Bargteheide, Germany
T: +49 45 32 / 289 0
F: +49 45 32 / 289 22 53
info@nord.com