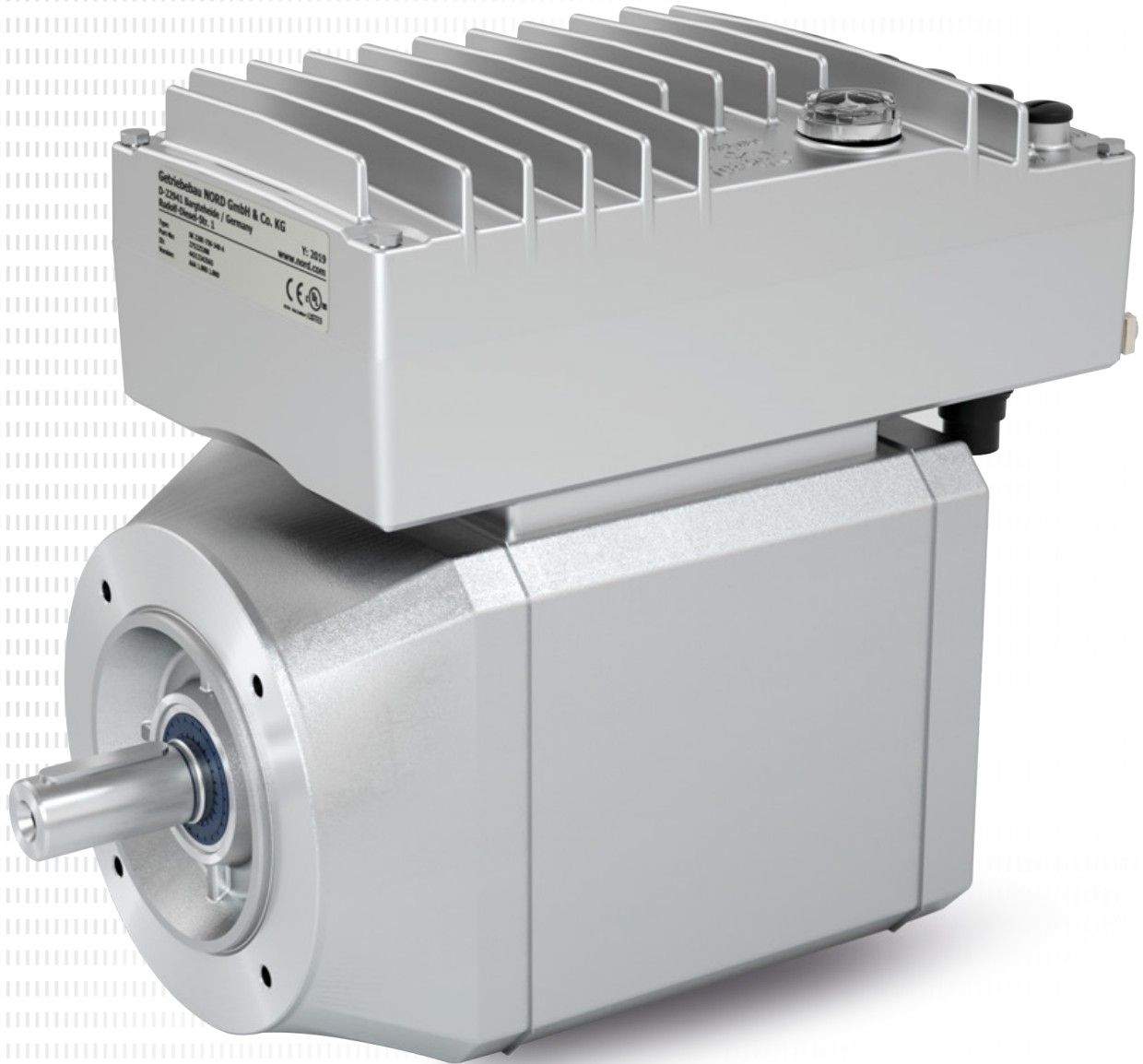


U.S. Availability
Q1 2022





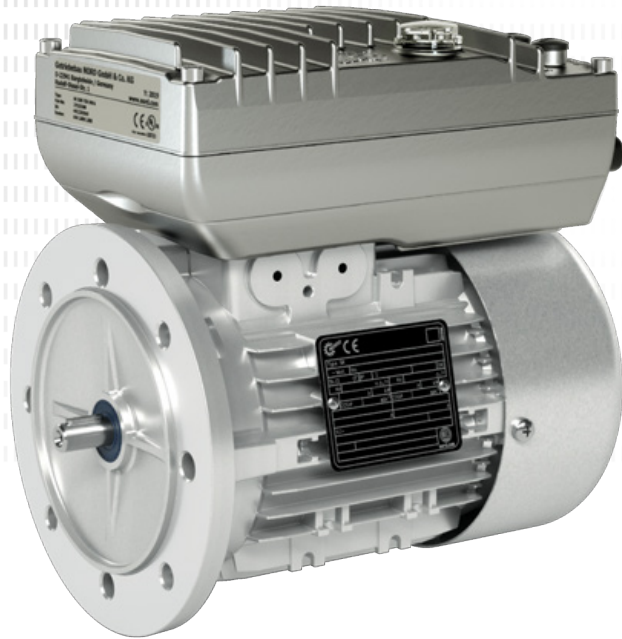
NORDAC *ON* and *ON+*
Compact - Focused - Powerful



NORDAC ON and ON+

One platform – two decentralized VFDs:

- ▶ Future-ready
 - ▶ IIoT capability
 - ▶ Firmware update via Ethernet
 - ▶ Integrated PLC
- ▶ Plug-and-Play for fast Internet-based networking
 - ▶ Full plug-in capability
 - ▶ Standardized VFD
- ▶ Reduction of variants
 - ▶ Drives usable over a wide frequency range
 - ▶ Integrated industrial Ethernet interfaces switchable via parameters  EtherCAT  EtherNet/IP
- ▶ Optimized design
 - ▶ Compact footprint
 - ▶ Integrated Ethernet communication



NORDAC ON

- ▶ Target application: Warehouse

Power: 0.25 – 1 HP*
 AC voltage: 3~ 400V
 Supply voltage: 24V DC external
 Typical overload: 150% for 60s,
 200% for 5s, 250% for 1s
 Ambient temperature: -22...+104°F (S1)
 Protection class: IP55

System overview:

Motor	BG1	BG2	BG3
63 LP/4 – 2,600 rpm	11 lb-in – 0.42 HP – 1.2 A		
71 SP/4 – 2,600 rpm	15 lb-in – 0.58 HP – 1.5 A		
71 LP/4 – 2,600 rpm		22.1 lb-in – 0.86 HP – 1.9 A	
ASM 80 – 2,600 rpm			In preparation

* more sizes in preparation

UL and STO certification in preparation for series release.

Features:

- ▶ Programmable Logic Controller (PLC)
- ▶ Encoder interface for NORDAC *ON+*
- ▶ Optional functional safety: STO from size 2
- ▶ Optional internal braking resistors from size 2
- ▶ Diagnostic interface for parameterization units or NORDAC *ACCESS BT* 
- ▶ Integrated brake control from size 2
- ▶ Integrated motor temperature sensor (TF)



NORDAC *ON+*

- ▶ Optimized for NORD IE5+ motors
- ▶ Target application: Intralogistics

Power: 0.50 – 1 HP*
 AC voltage: 3~ 400V
 Supply voltage: 24V DC external
 Typical overload: 150% for 60s,
 200% for 5s, up to 300% for 1s
 Ambient temperature: -22...+104°F (S1)
 Protection class: IP66

System overview:

Motor	Size 2	Size 3
IE5+ SK 71 N1/8 - 2,100 rpm	14.2 lb-in - 0.47 HP - 0.76 A	
IE5+ SK 71 N2/8 - 2,100 rpm	28.3 lb-in - 0.94 HP - 1.45 A	
IE5+ SK 90 Nx/8 - 2,100 rpm		In preparation

* more sizes in preparation

Motors can be attached to all NORD gear units via direct motor mounting or IEC/NEMA adapters.

More information:



Wall mounting:

- ▶ Usable for NORDAC *ON* and *ON+**
- ▶ Range of functions similar to the motor-mounted VFD
- ▶ Additional option: key and maintenance switch

*US availability Q1 2022



www.nord.com

NORD Gear Corporation - US

Waunakee, WI
800 NORD Drive
Waunakee, WI 53597
Tel. 888.314.6673
info.us@nord.com

Corona, CA
1180 Railroad St.
Corona, CA 92882
Tel. 888.314.6673
info.us@nord.com

Charlotte, NC
300E Forsyth Hall Dr.
Charlotte, NC 28273
Tel. 888.314.6673
info.us@nord.com

NORD Gear Limited - Canada

Brampton, ON
41 West Drive
Brampton, ON L6T4A1
Tel. 800.668.4378
info.ca@nord.com

NORD DRIVE SYSTEMS SA DE CV

Queretaro, Mexico
Av. Industria Textil B.6
Parque Industrial PYME, Huimilpan
QRO - Mexico 76950
Tel. 52 442 688 7110
info.mx@nord.com