

# NORDAC *ON* and *ON+*

Compact - Focused - Powerful

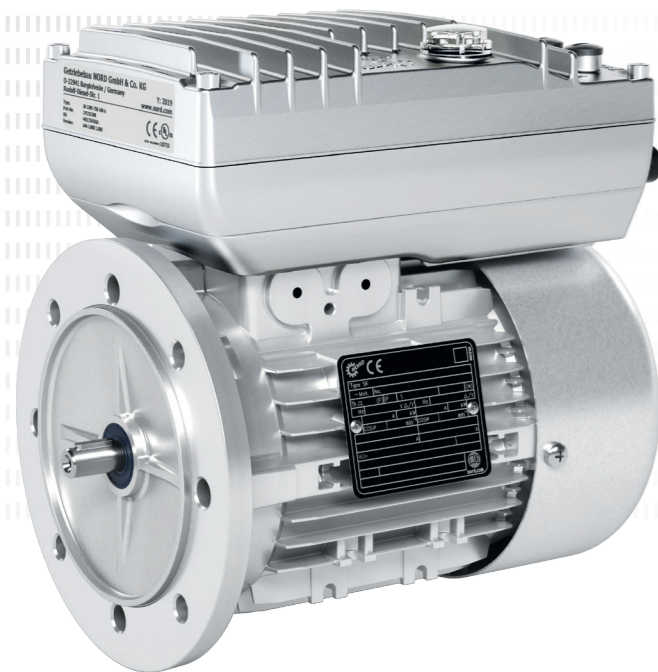


## One platform – two decentralised inverters:

- ▶ Future-proof
  - ▶ IIoT capability
  - ▶ Firmware update via Ethernet
  - ▶ Integrated PLC
- ▶ Plug & Play for fast IBN
  - ▶ Full plug-in capability
  - ▶ Standardised inverter
- ▶ Reduction of variants
  - ▶ Drives usable over a wide frequency range
  - ▶ Integrated industrial Ethernet interfaces switchable via parameters
- ▶ Optimised design
  - ▶ Very compact design
  - ▶ Space-saving due to integration of Ethernet communication

## Features:

- ▶ Programmable logic controller (PLC)
- ▶ Encoder interface for NORDAC *ON+*
- ▶ Optional functional safety: STO from size 2
- ▶ Optional internal braking resistors from size 2
- ▶ Diagnostic interface for parameterisation units or NORDAC *ACCESS BT*
- ▶ Integrated brake control from size 2
- ▶ Integrated motor temperature sensor (TF)



### NORDAC *ON*

- ▶ Target application: Warehouse

Power: 0.18 – 0.75 kW\*  
 Mains voltage: 3~ 400V  
 Supply voltage: 24V DC external  
 Typical overload: 150% for 60s, 200% for 5s, 250% for 1s  
 Ambient temperature: -30...+40°C (S1)  
 Protection class: IP55



### NORDAC *ON+*

- ▶ Optimised for NORD IE5+ motor
- ▶ Target application Intralogistics

Power: 0.37 – 0.75 kW\*  
 Mains voltage: 3~ 400V  
 Supply voltage: 24V DC external  
 Typical overload: 150% for 60s, 200% for 5s, up to 300% for 1s  
 Ambient temperature: -30...+40°C (S1)  
 Protection class: IP66

## System overview:

Motor	BG1	BG2	BG3
63 LP/4 – 2,600 rpm	1.25 Nm – 0.31 kW – 1.2 A	1.25 Nm – 0.31 kW – 1.2 A*	
71 SP/4 – 2,600 rpm	1.7 Nm – 0.43 kW – 1.5 A	1.7 Nm – 0.43 kW – 1.5 A*	
71 LP/4 – 2,600 rpm		2.5 Nm – 0.64 kW – 1.9 A	
80 SP/4 – 2,600 rpm		3.67 Nm – 0.95 kW – 2.2 A	
ASM 80 – 2,600 rpm			In preparation

UL and STO certification in preparation for series release!

\* These frequency inverter - motor combinations are possible when functions such as brake control or the installation of the SK CU6-STO / internal braking resistor is necessary.

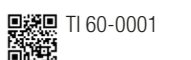
## System overview:

Motor	Size 2	Size 3
IE5+ SK 71 N1/8 - 2,100 rpm.	1.6 Nm - 0.35 kW - 0.76 A	
IE5+ SK 71 N2/8 - 2,100 rpm.	3.2 Nm - 0.7 kW - 1.45 A	
IE5+ SK 90 Nx/8 - 2,100 rpm.		In preparation

\* more sizes in preparation

Motors can be attached to all NORD gear units via direct motor mounting or IEC/NEMA adapters.

For more information:



### Wall mounting:

- ▶ Usable for NORDAC *ON* and *ON+*
- ▶ Range of functions as with the motor-mounted inverter
- ▶ Additional option: key and maintenance switch



## NORD DRIVESYSTEMS Group

- ▶ Family business from Bargteheide near Hamburg with 4,000 employees
- ▶ Drive solutions for more than 100 branches of industry
- ▶ 7 production locations worldwide
- ▶ Present in 98 countries on 5 continents
- ▶ More information: [www.nord.com](http://www.nord.com)

### Headquarters:

Getriebebau NORD GmbH & Co. KG  
 Getriebebau-Nord-Str. 1  
 22941 Bargteheide, Germany  
 T +49 4532 2890  
 F +49 4532 289 2253  
[info@nord.com](mailto:info@nord.com)